

The Why and What I Need To Know

Winston Tan MD FACP
Associate Professor of Medicine
Vice Chair Hematology/Oncology Education
Mayo Clinic
FLASCO Secretary

Aims

1. Basics of learning
2. review a clear understanding of how cancer is diagnosed and treated



Questions

Years in practice

Expectations of this course

Confidence Thermometer 1-10



EDUCATION

IS NOT THE



FILLING

OF A PAIL

LIGHTING

OF A FIRE



Technology & Globalization

- Adaptability & Lifelong Learning

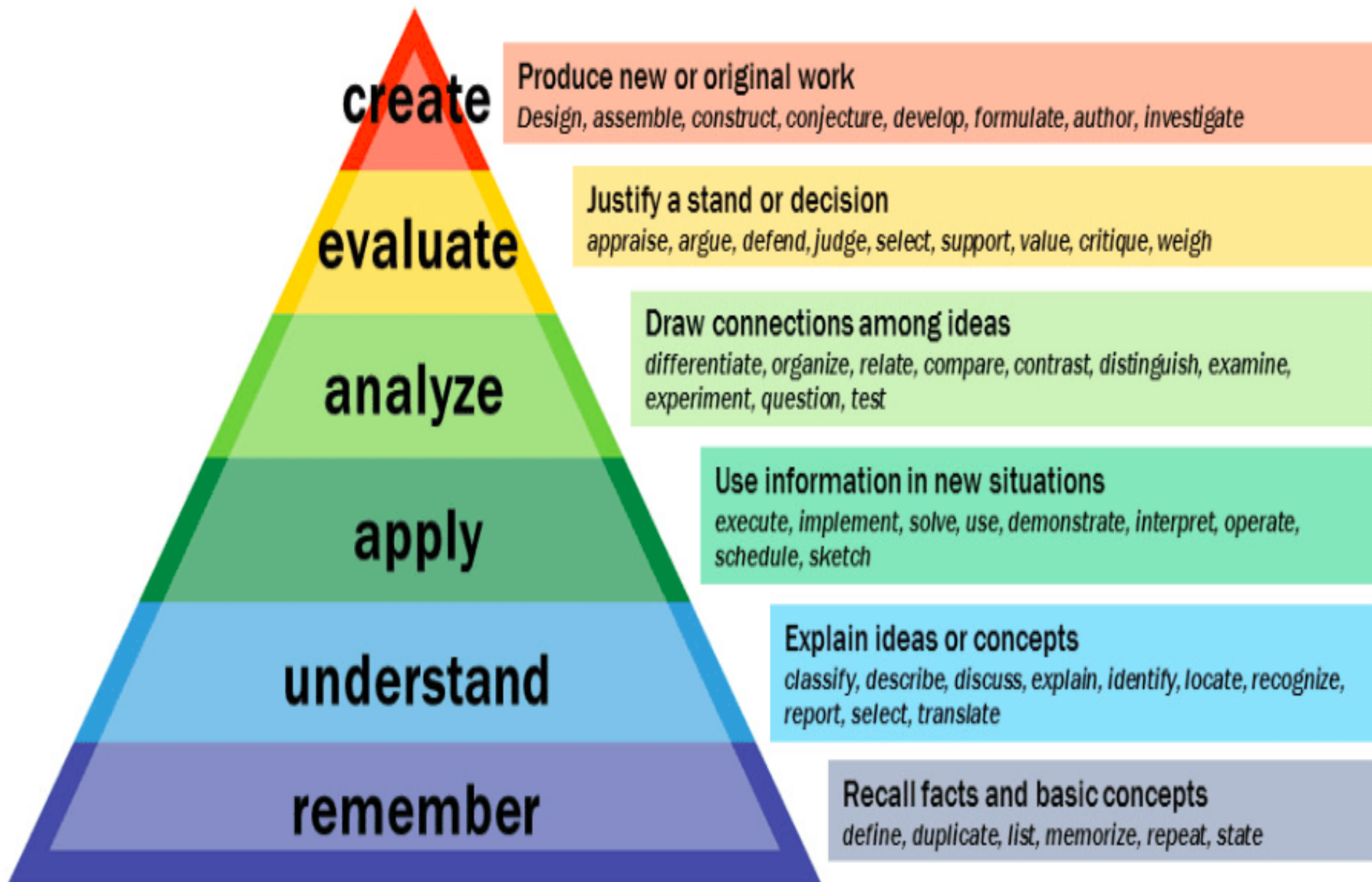
Friedman (2005)
Tapscott (1998)



Empowering learning

- Only learners can do the learning
- Empowering learners redefining the relationship between teacher and learner.
- co-creation of learning.
- The role of the teacher involves guiding and facilitating, rather than transmitting information to learners.

Bloom's Taxonomy



Diagnosis

- Biopsy
- Surgery
- Complex cases

monitoring

Staging

- Stage I local
- Stage II local
- Stage III locally advanced
- Stage IV metastasis

Multidisciplinary approach

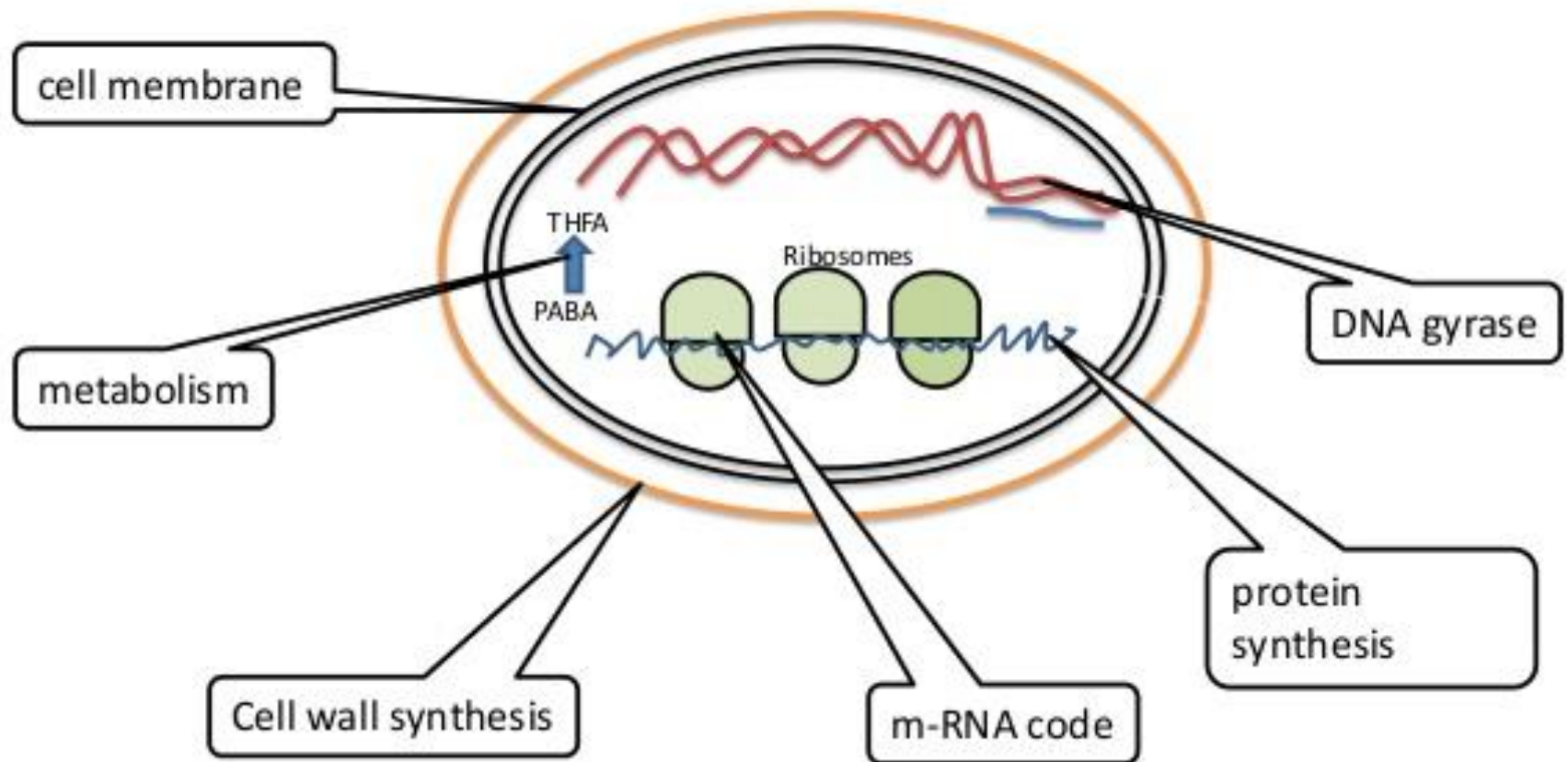
Team

- Surgeon
- Oncologist
- Radiation oncologist
- Physical Medicine
- Cardiologist
- Social worker
- Psychiatrist
- Gastroenterologist
- Cancer geneticist
- Nurse
- Pharmacist

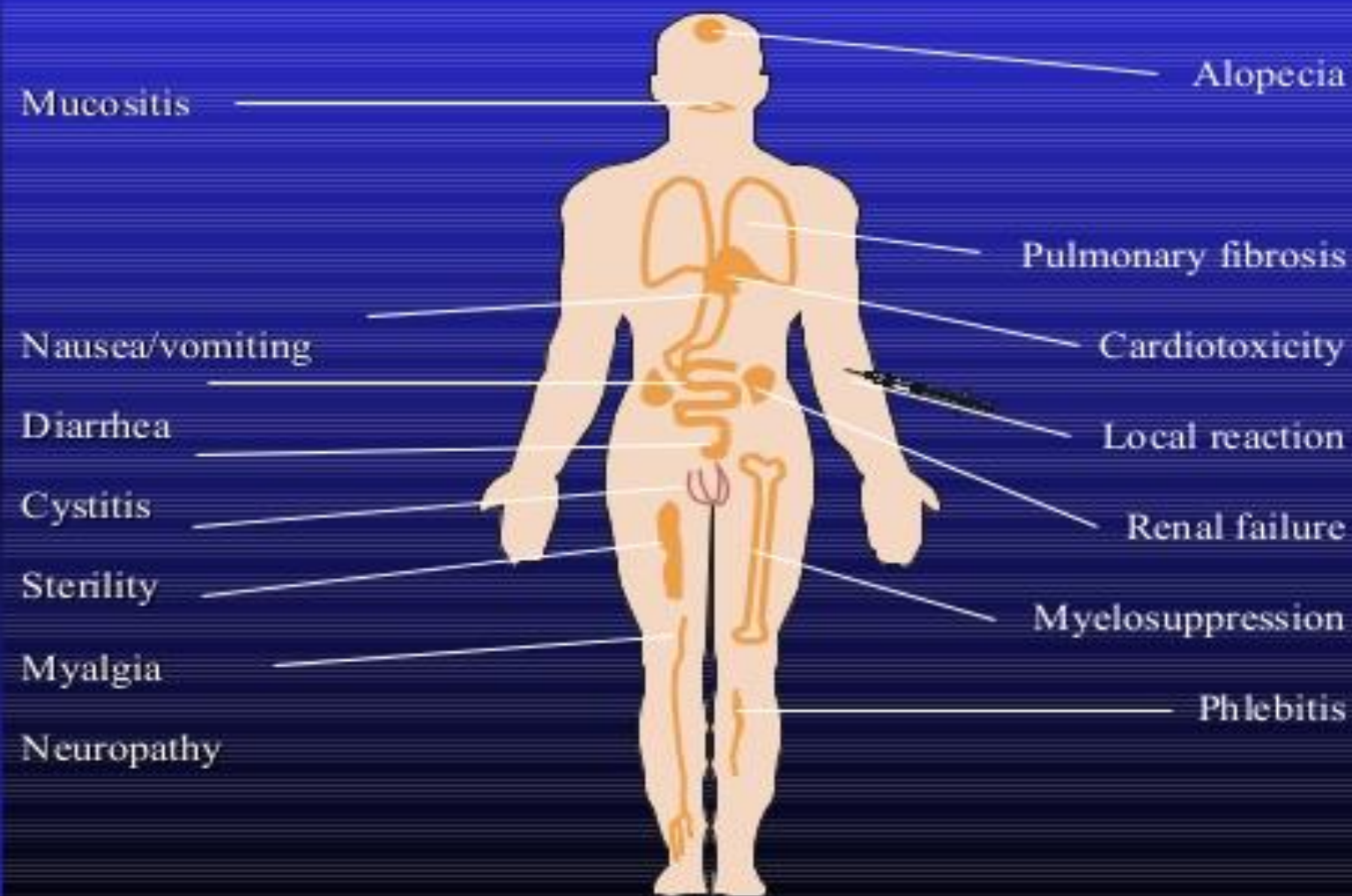
MODALITIES OF TREATMENT

- **1-local therapy:**
 - ◆ **-surgery.**
 - ◆ **-radiation therapy.**
- **2-systemic treatment:**
 - ◆ **chemotherapy.**
 - ◆ **Hormonal therapy.**
 - ◆ **Monoclonal antibodies.**
 - ◆ **Radioactive material.**
- **3-supportive care.**
- **4-non-conventional therapy.**

B. Mechanism of action



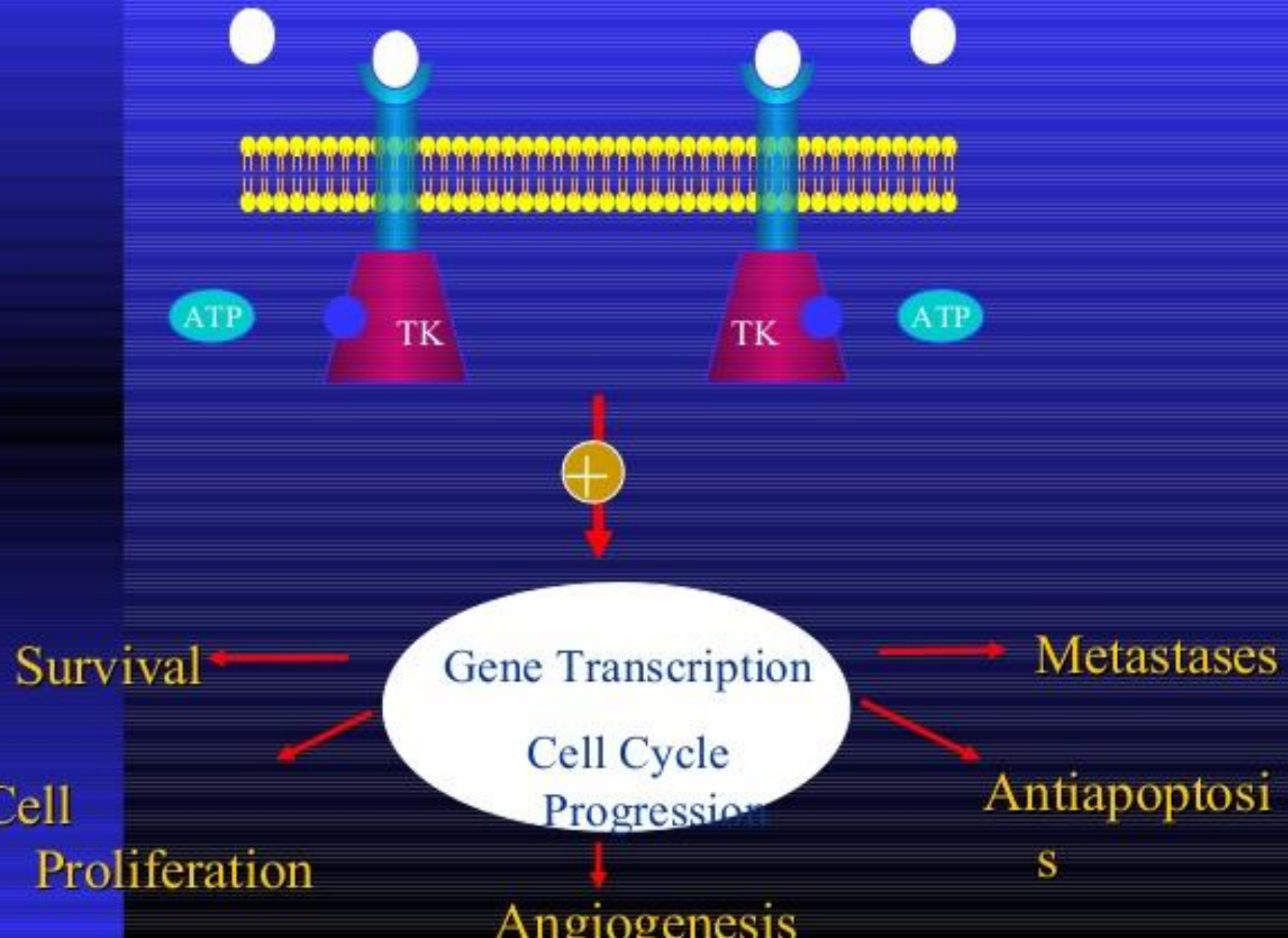
SIDE EFFECTS OF CHEMOTHERAPY



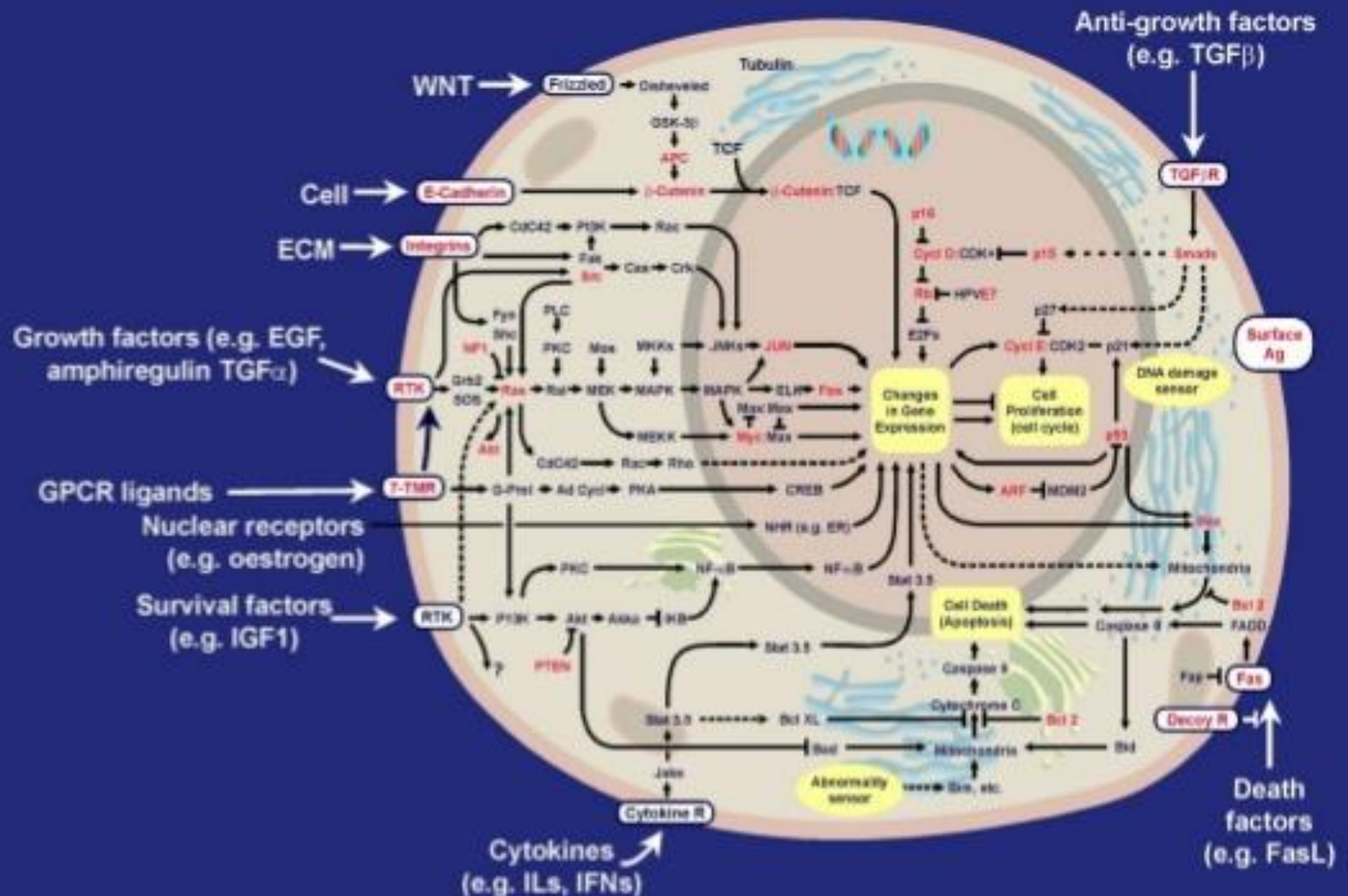
CRITERIA USED TO DESCRIBE RESPONSE ARE:

- **Complete response** (complete remission) is the disappearance of all detectable malignant disease.
- **Partial response** : is decrease by more than 50% in the sum of the products of the perpendicular diameters of all measurable lesions.
- **Stable disease** : no increase in size of any lesion nor the appearance of any new lesions.
- **Progressive disease** : means an increase by at least 25% in the sum of the products of the perpendicular diameters of measurable lesion or the appearance of new lesions.

Tumor Cell Stimulation



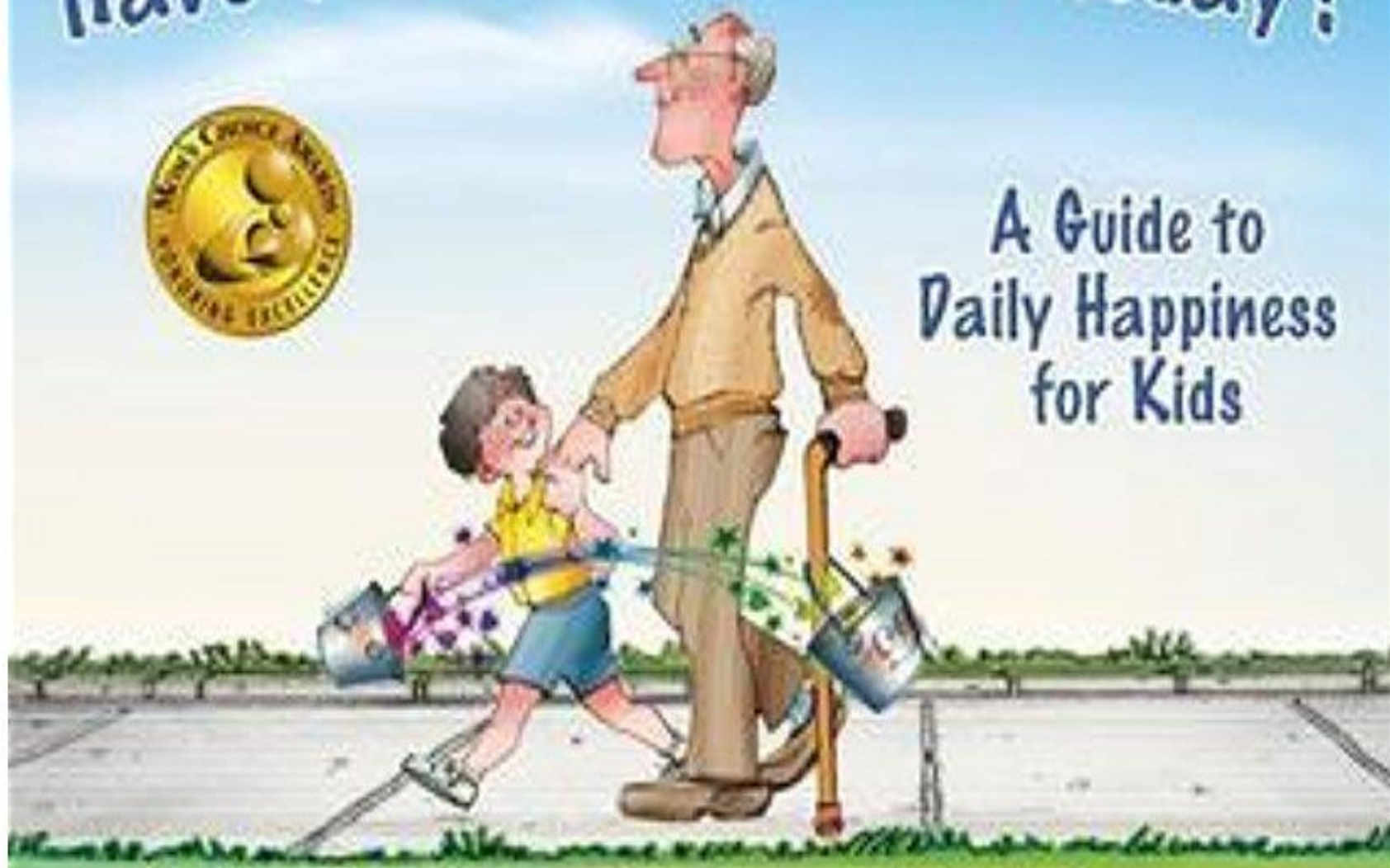
SIGNALLING PATHWAYS



Have You Filled a Bucket Today?



A Guide to
Daily Happiness
for Kids



By Carol McCloud ... Illustrated by David Messing



Need to register

FLASCO meetings

September 2019

Jacksonville Florida

rapid integration course

Simulation oncologic emergencies/debriefing learning

Post course

- Did we meet your expectations ?
- What was new and most useful for you?
- How do you feel about the course load/structure?
- What are the strengths of the course?
- What are the areas of improvement? Suggestions
- What are the topics that are applicable to your practice?
- Confidence thermometer

Educating “Intentional Learners”

who can adapt to new environments, integrate knowledge from different sources, and continue learning throughout their lives.”

Intentional Learners Are:

- Empowered
- Informed
- Responsible



Greater Expectations
(2002 AACU Report)



Thank you

Tan.winston@mayo.edu