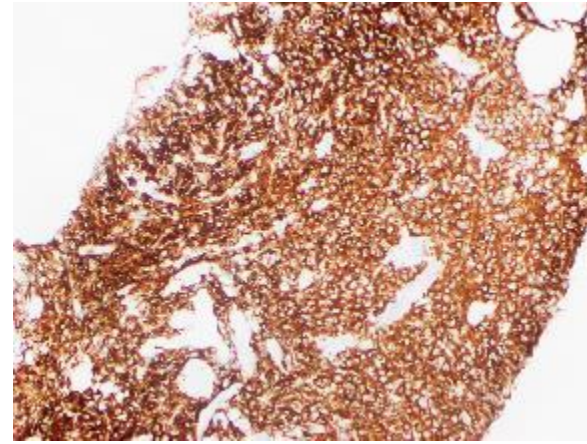
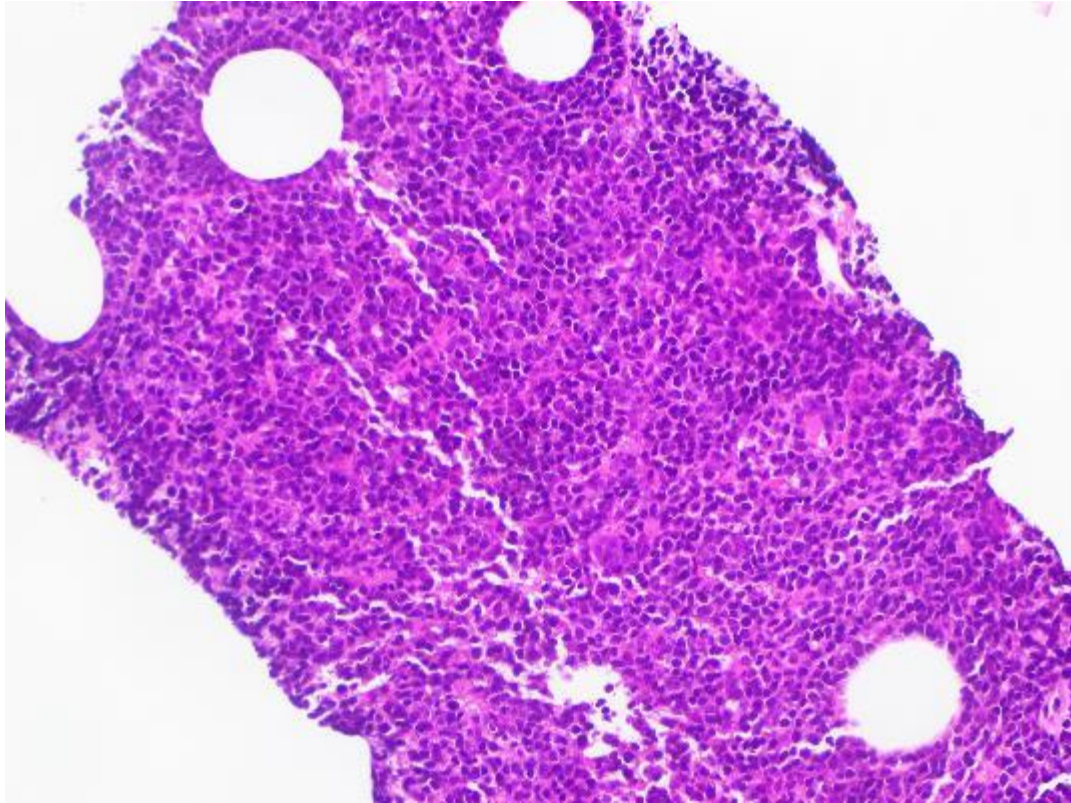
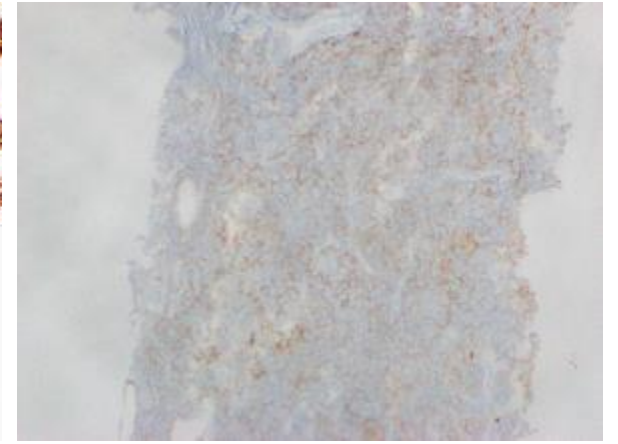


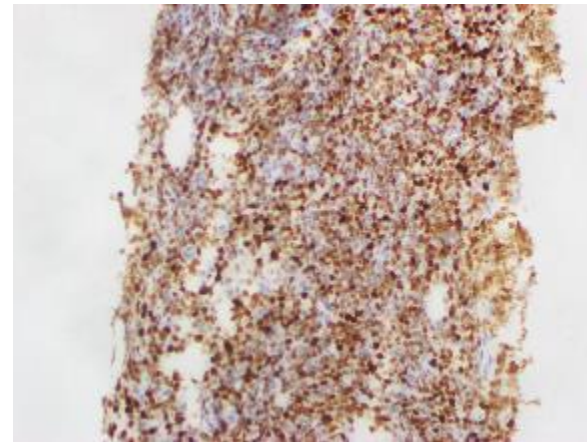
Left upper forearm lesion biopsy, 10/2021



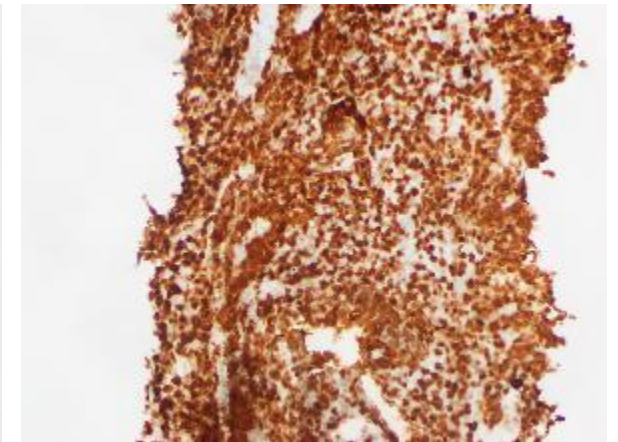
CD20



CD10



BCL6



Ki-67

Diffuse large B-cell lymphoma, germinal center B-cell type.

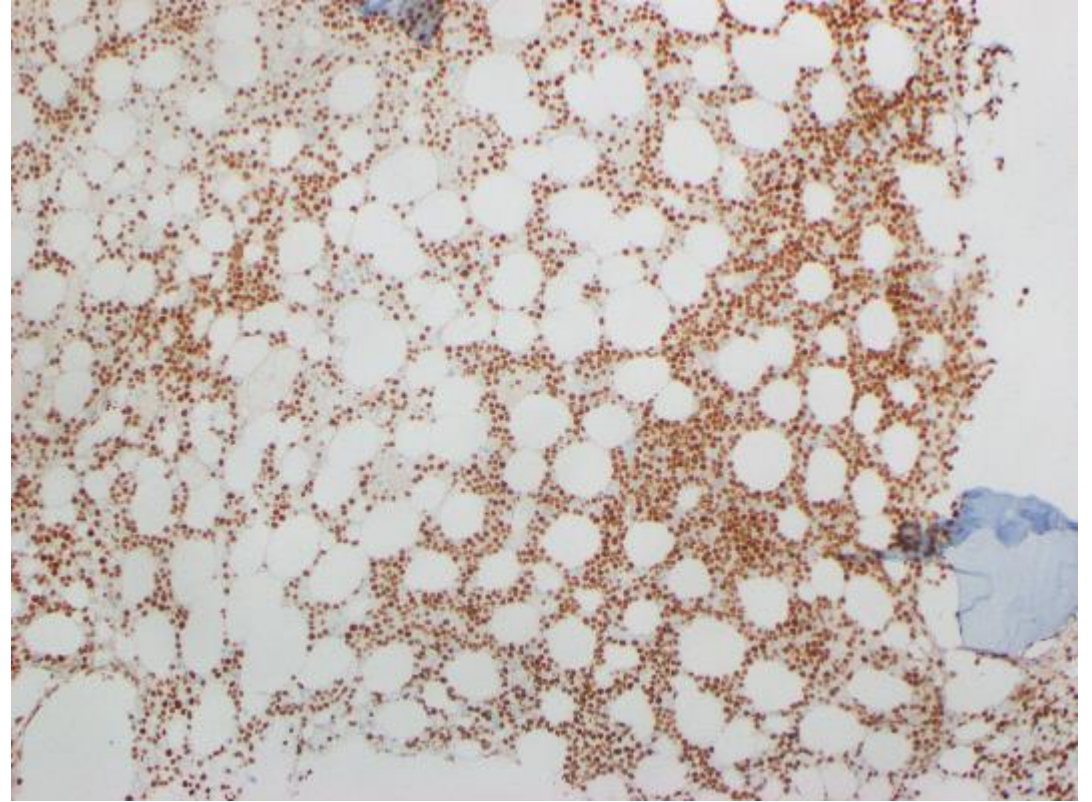
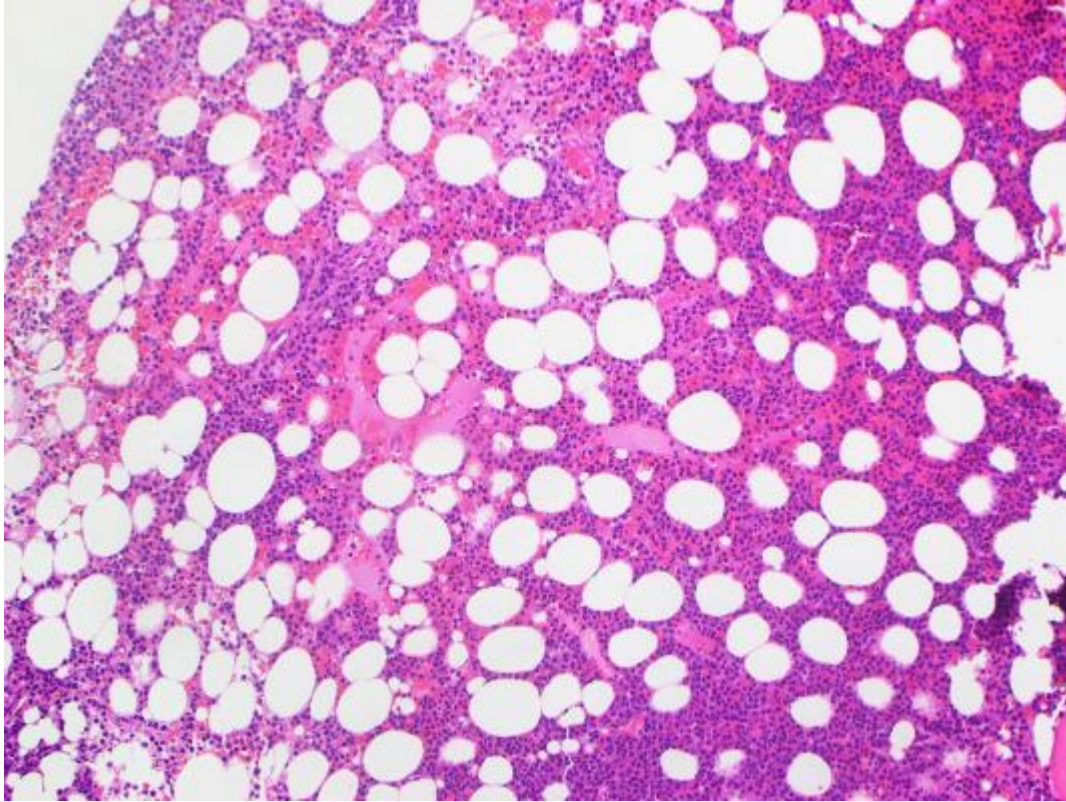
IHC CD20+, PAX5+, CD10+, BCL6+, BCL2+; CD30-, MUM1-, CD21-, BCL1 (cyclin D1) -, C-MYC-, CD34 - and TDT -. EBER (ISH) -. Ki-67 proliferation rate is ~90%.

Flow cytometry: A CD10+ clonal B cell population.

FISH: c-MYC gene rearrangement is not detected; BCL6 rearrangement is detected in 81% of cells; BCL2 rearrangement is detected in 68.5% of cells.



Bone marrow biopsy, 2/2023



PAX5

Hypercellular marrow with extensive involvement by B-cell lymphoma with aggressive features.